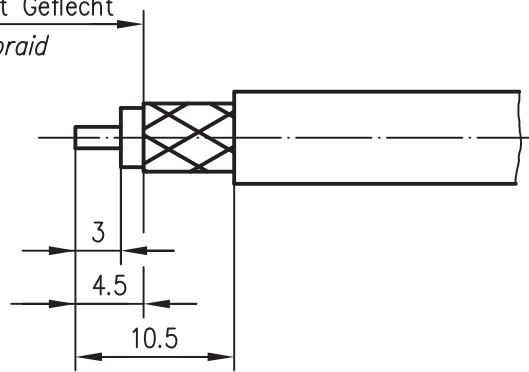


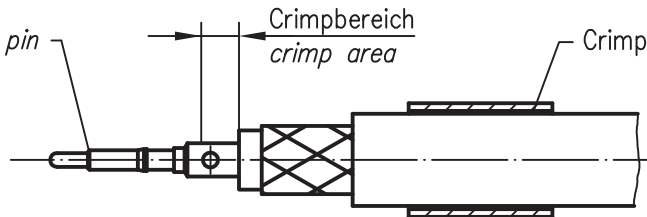
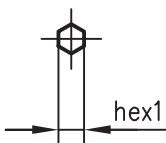
Folie bündig mit Geflecht  
foil even with braid



Kontaktstift *contact pin*

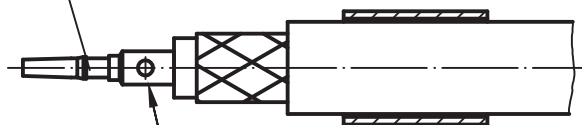
Crimpbereich  
*crimp area*

Crimprohr *crimp ferrule*



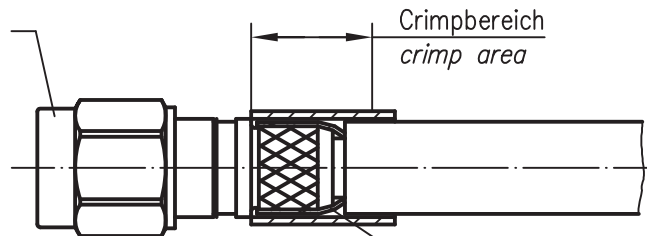
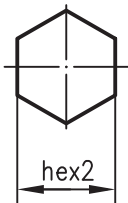
Kontaktbuchse *contact socket*

weichlöten *solder*



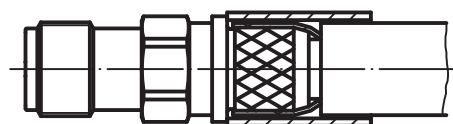
Gehäuse *housing*

Crimpbereich  
*crimp area*



Geflecht *braid*

Folie in den Crimpanschluß schieben  
foil goes inside housing



XX	Crimpeinsatz <i>crimp insert</i>	6kt.1 x Länge <i>hex1 x length</i>	6kt.2 x Länge <i>hex2 x length</i>
05	N01001A0005	1.69x2.5	5.41x8
31	N01001A0056	1.69x2.5	6.48x8

h	17233	25.11.05	JA
g	16567	21.04.05	BJ
f	15491	21.04.04	GE
e	14969	07.11.03	BJ
Index <i>index</i>	Änderung <i>modification</i>	Datum <i>date</i>	Name <i>name</i>

	Datum <i>date</i>	Name <i>name</i>
Gez. <i>drawn</i>	13.04.95	HM
Gepr. <i>app'd</i>	19.04.95	BJ

**Series SMA crimp/crimp; crimp/solder**  
**Serie SMA crimp/crimp; crimp/löt**

Untert.-  
Art **R** TG-Nr.  
**T00100C2700**

Ersatz für/replacement for

Original **A4** Blatt **1/1**  
*original sheet*

Maßstab **2:1**  
*scale*

